



Anti-Lamin B1 Monoclonal Antibody (15T1)

Cat #: ABL1090

Size: 50µl/200µl/200µl×5

Product Information

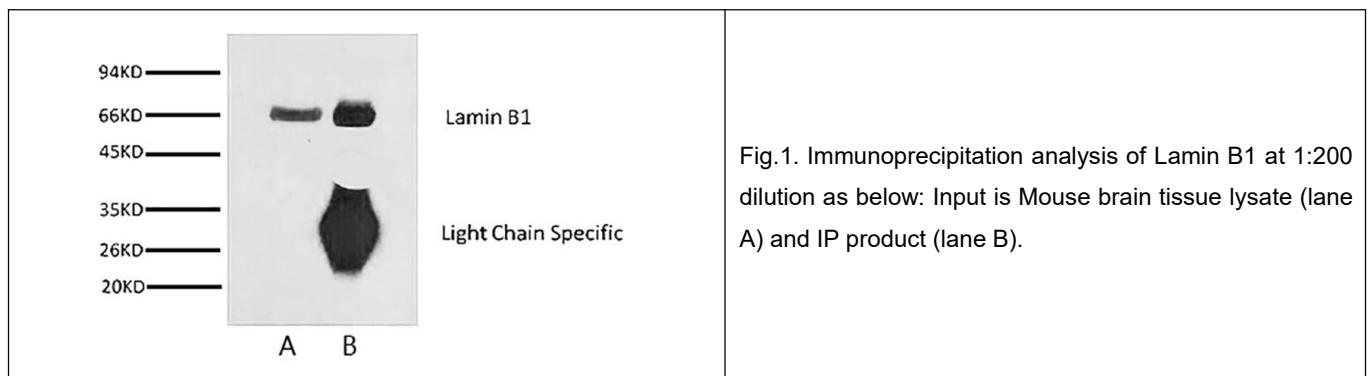
| | | | |
|---|--|---|---|
| | Product Name: Anti-Lamin B1 Monoclonal Antibody (15T1) | | |
| | Applications: WB, IHC, IF, IP | | Isotype: Mouse IgG |
| | Reactivity: Human, Mouse, Rat | | |
| REF | Catalog Number: ABL1090 | LOT | Lot Number: Refer to product label |
| | Formulation: Liquid | | Concentration: 1 mg/ml |
|  | Storage: Store at -20°C. Avoid repeated freeze / thaw cycles. |  | Note: Contain sodium azide. |

Background: LMNB1 encodes one of the two B-type lamin proteins and is a component of the nuclear lamina. A duplication of LMNB1 is associated with autosomal dominant adult-onset leukodystrophy (ADLD). Alternative splicing results in multiple transcript variants.

Application Notes: Optimal working dilutions should be determined experimentally by the investigator. Suggested starting dilutions are as follows: WB (1:2000-1:5000), IHC (1:50-1:300), IF (1:200), IP (1:200).

Storage Buffer: Liquid in PBS, pH 7.4, containing 0.02% Sodium Azide as preservative and 50% Glycerol.

Storage Instructions: Stable for one year at -20°C from date of shipment. For maximum recovery of product, centrifuge the original vial after thawing and prior to removing the cap. Aliquot to avoid repeated freezing and thawing.



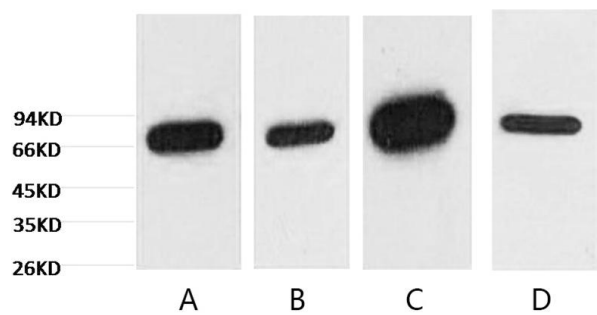


Fig.2. Western blot analysis of Lamin B1 expression in HepG2 cell (lane A), 293T cell (lane B), Mouse brain tissue (lane C) and Rat brain tissue (lane D) at 1:5000 diluted, separately.

Note: The product listed herein is for research use only and is not intended for use in human or clinical diagnosis. Suggested applications of our products are not recommendations to use our products in violation of any patent or as a license. We cannot be responsible for patent infringements or other violations that may occur with the use of this product.